

Bluelake Software

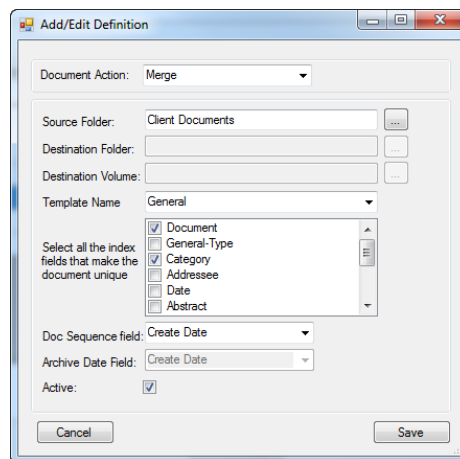
Merge/Archive Utility for Laserfiche

Overview and Instructions

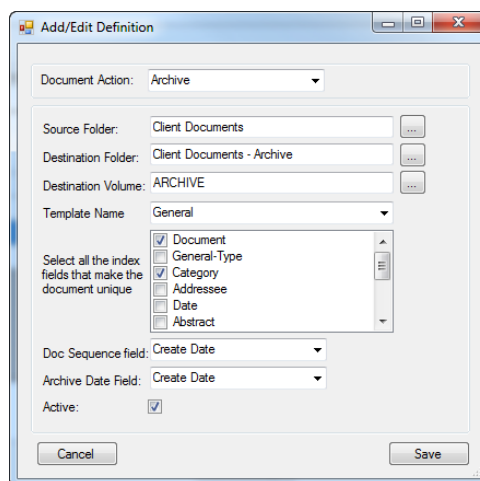
Description:

The Bluelake Merge/Archive Utility for Laserfiche is a dual purpose tool for managing document versions within Laserfiche. The process of setting up Merge or Archive processes is simple, and once configured, individual Merge or Archive function definitions can be run as recurring tasks or on an ad hoc basis.

Merge Documents: Select documents to be merged based on common meta data values, and merge them in sequence based on the contents of a Laserfiche Template field or Document Create or Modified Dates.



Archive/Move Documents: Select documents to be compared based on common meta data values, and determine the documents to archive based on the Create or Modified date of the document.



A demo download is available at <http://www.bluelake.com/Products> or for more information please contact us at (888) 374-2220 x201 or by email at sales@bluelake.com.