



www.bluelake.com

Bluelake Document Print Utility for Kofax Overview

The Bluelake Document Print utility for Kofax provides a point and click interface embedded within the Kofax Capture Scan, Quality Control module, or Validation Modules. Right-click menu options from within these modules allow for the printing of an entire document, selected pages within a document, or a single page.

System Requirements/Compatibility:

- Kofax Version 5.51 through 10.x

Download and Installation:

A demo download of the application is available at our website at <http://www.bluelake.com/Products> under the Kofax-Related Apps and Utilities section.

After download, double-click on the exe file to invoke the install. Make sure the Kofax Ascent Capture Quality Control module is closed before running the install.

The demo download provides a 15 day fully functional version of the product, which can be converted to a permanent copy by purchasing a license.

Pricing:

Single Copy:	\$ 200
3-Pack:	\$ 450
5-Pack:	\$ 625
10-Pack:	\$1000

For more information or to purchase licenses, please contact:

Bluelake Software, Inc.

www.bluelake.com

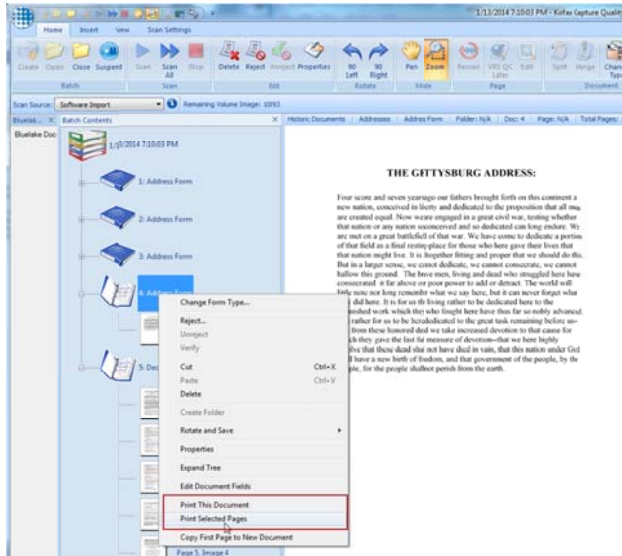
Phone: (888) 374-2220 x201

Email: info@bluelake.com

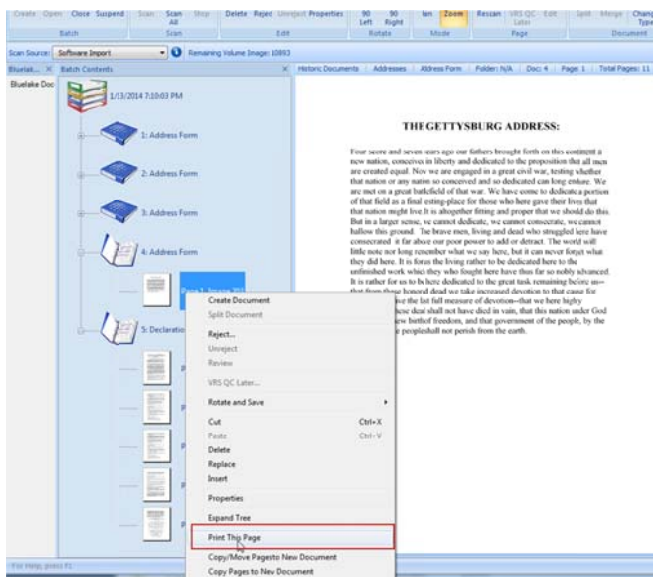
Bluelake Document Print Utility for Kofax User Instructions

After installation, when opening the Kofax Capture Scan, Quality Control, or Validation Modules, new menu options will be visible when right clicking on a document, or on a page within a document.

For instance, when selecting a Document entry, **“Print This Document”**, and **“Print Selected Pages”** will be available among the other right-click menu options.

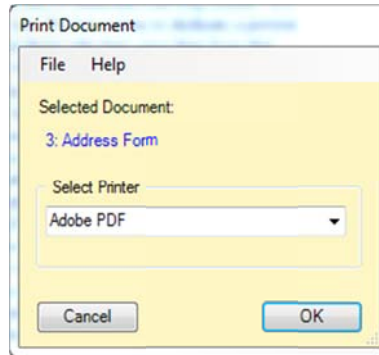


Alternately, when a single page entry is selected a **“Print this Page”** option will be available. These functions are discussed below.

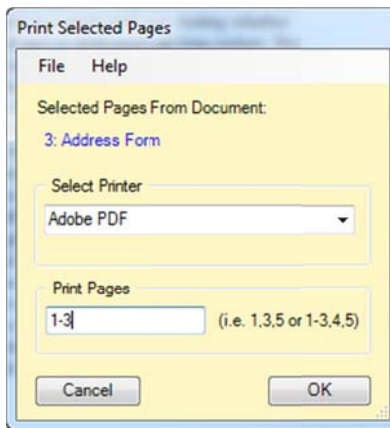


Print This Document

Presents a printer selection dialog, and prints all pages in the currently selected document.

**Print Selected Pages**

Presents a printer and page range selection dialog. Page ranges can be expressed using hyphens – for instance "1-3" – or individual pages can be expressed using commas – for instance "1,3,5".

**Print This Page**

Presents a printer selection box and prints the currently selected page within a document. Available only when a single page within a document is selected.

